



SLIM TWO

OWNER'S MANUAL





PRODUCT INFORMATION

Safety Precautions.....4
Parts & Dimensions.....8
Product.....9
Remote Control.....10

PRODUCT INSTALLATION

Product Installation.....11

PRODUCT OPERATION

How to Use.....14
Maintenance & Cleaning.....22
Settings.....24
Troubleshooting.....25
Specifications.....26

WARRANTY

Warranty.....27



IMPORTANT SAFEGUARDS

- When using electrical products, especially when children are present, basic safety precautions should always be followed.

READ ALL INSTRUCTIONS BEFORE USING

- For use with 120V 60Hz: Power supply must be a 15 Amp GFCI outlet.
- The electrical cord must be connected to a GFCI outlet.
- The GFCI outlet should be 1 ft. above the floor.
- Install only in well-ventilated areas to avoid excess humidity.
- Do not install in narrow toilet stalls or in shower stalls.
- Install only where direct contact with water is minimized.
- Do not install near any heat source.
- Avoid using extension cords if possible. Consult with a certified electrician where extension cords are necessary.

DANGER - TO REDUCE THE RISK OF ELECTROCUTION

- Do not use while bathing.
- Do not place or store products where it can fall or be pulled into a tub or sink.
- Do not place in or drop into water or other liquid.
- Do not reach for a product that has fallen into water. Unplug immediately.

WARNING - TO REDUCE THE RISK OF BURNS, ELECTROCUTION OR INJURY TO PERSONS:

- Close supervision is necessary when this product is use by, on, or near children.
- Use this product only for its intended use as described in this manual. Only use attachments recommended by the manufacturer.
- Never operate this product if it has a damaged cord or plug, if it is not working properly, has been dropped or damaged, or dipped into water. Return the product to a service center for examination and repair.
- Keep the cord away from heated surfaces.
- Never drop or insert any objects into any opening or hose.
- Do not use outdoors or operate where aerosol (spray) products are being used or where oxygen is being administered.
- Connect this product to a properly ground outlet only. See grounding instructions.
- Unplug this product before filling. Fill (reservoir) with water only.



GROUNDING INSTRUCTION

DANGER- Improper use of the grounding plug can result in a risk of electric shock.

This product has a three-prong grounding plug, which must be plugged into an outlet that is properly installed and grounded. In the event of an electrical short circuit, grounding reduces the risk of shock by providing an escape wire for the electrical current. If repair or replacement of the cord or plug is necessary do not connect the grounding wire to either flat blade terminal.

The wire with insulation having an outer surface that is green with or without yellow stripes is the grounding wire. Check with a qualified electrician or service person if the grounding instructions are not completely understood, or if in doubt as to whether the product is properly grounded.

This product is for use on a nominal 120V circuit, and has a grounding plug that looks like the plug illustrated in sketch A in Figure 1.

A temporary adapter, which looks like the adapter illustrated in sketches B and C, may be used to connect this plug to a 2-pole receptacle as shown in sketch B if a properly grounded outlet is not available.

The temporary adapter should be used only until a properly grounded outlet (sketch A) can be installed by a qualified electrician.

The green colored rigid ear, lug, or the like extending from the adapter must be connected to a permanent ground such as a properly grounded outlet box cover. Whenever the adapter is used, it must be held in place by the screw.

OPTIONAL GROUNDING INSTRUCTIONS

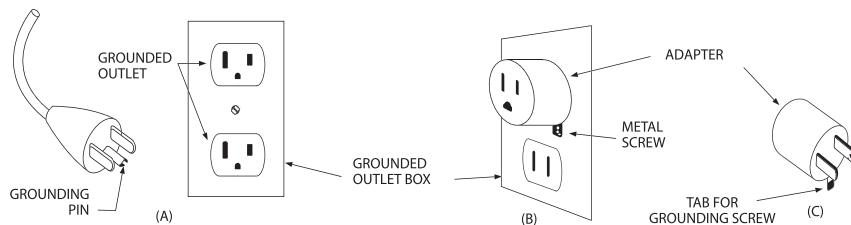
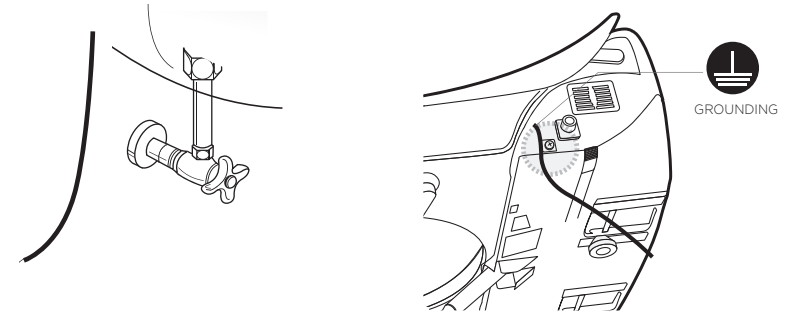
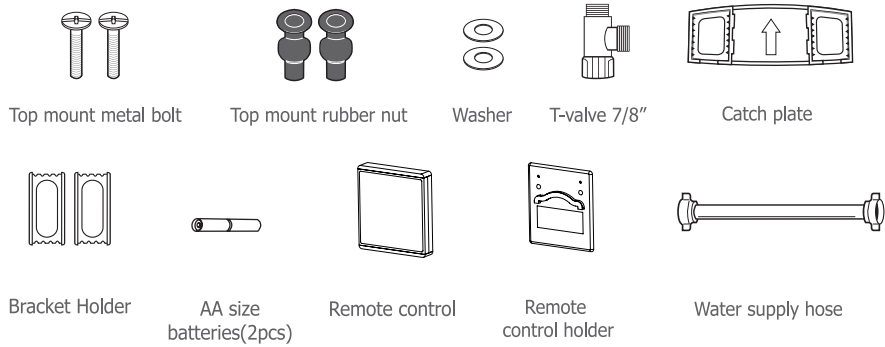
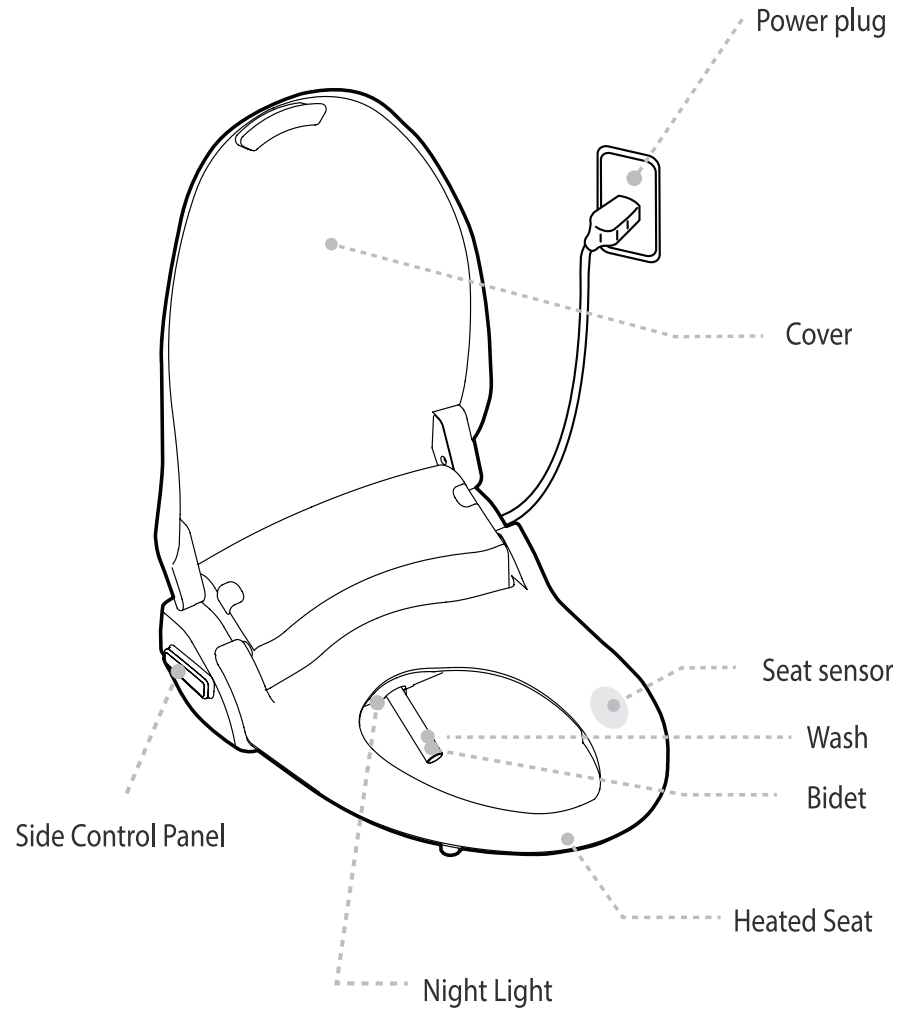
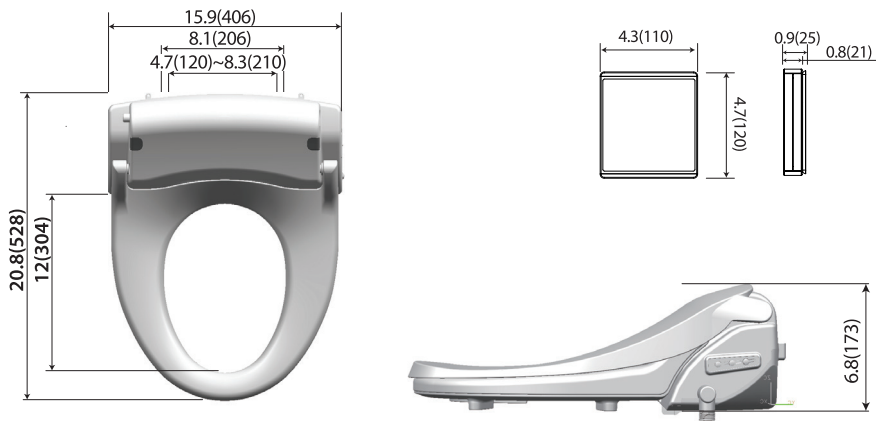
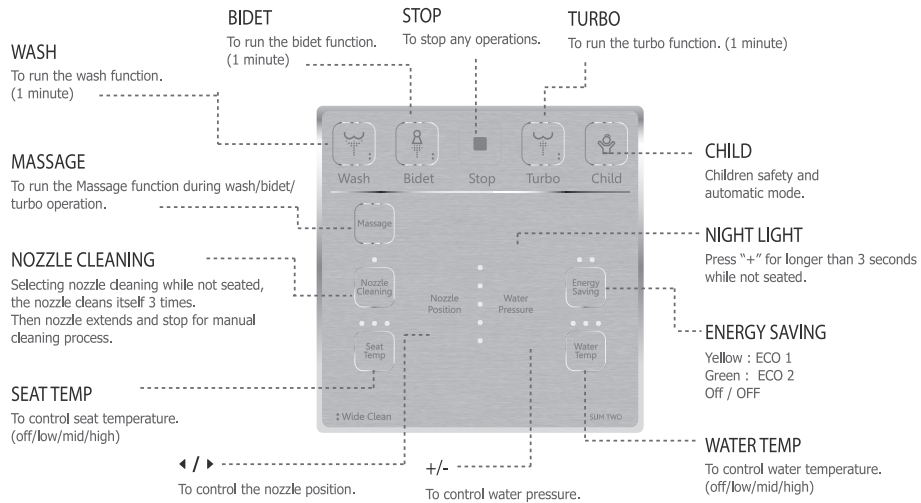


FIGURE 1

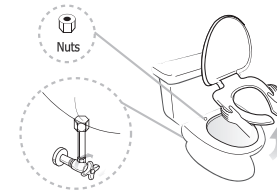


ELONGATED TYPE



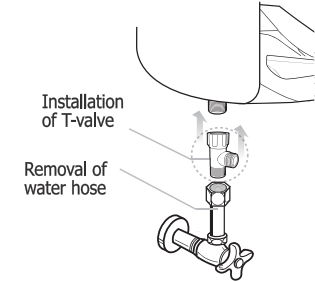


1. Remove the seat from the existing toilet body.



- Release the nuts, and then remove the seat and cover.
- Store the seat in a proper place for future use.
- Turn off the water.

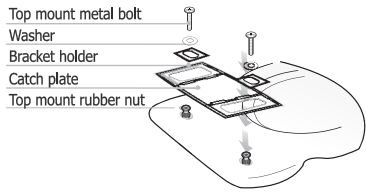
2. Install the T-Valve.



- Remove the existing water hose and then install T-valve to the bottom of the toilet tank. Ensure the rubber washer is properly seated and attach the original water hose to the T-Valve.

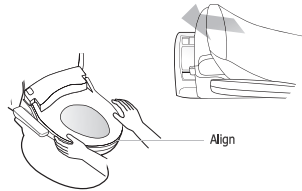


3. Fix the bracket onto the toilet.



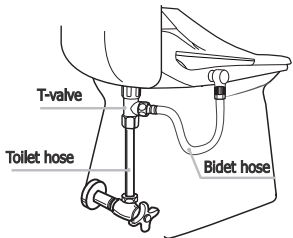
- Point the arrow on the catch plate towards the toilet tank.

4. Push the main body toward the catch plate completely.



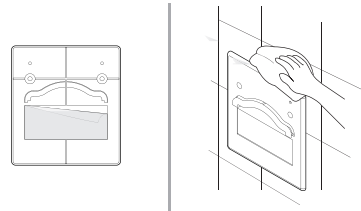
- Push it until you hear a “click”.
- When the product is not installed well, it may cause leakage.
- Adjust as needed before tightening bolts. Do not over tighten the bolts.

5. Connect bidet hose.



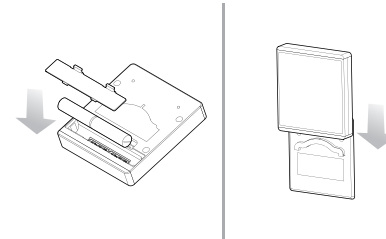
- After installing the T-valve, connect the supplied bidet hose from the center of the T-valve to the bidet.
- Turn on the water and check for leaks.

6. Attach the remote control bracket to the wall.



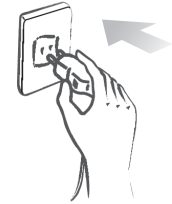
- Remove the adhesive protection to attach the remote control bracket to the wall or other surface.
- Clean the area thoroughly before attaching the bracket.

7. Insert two “AA” type batteries.



- Insert the included batteries inside the battery compartment.
- Identify a location in the bathroom for the remote control that is visible and reachable from the toilet.

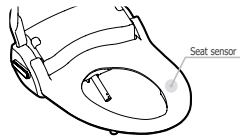
8. Plug in!



- Plug in and be sure that the nozzle comes out and retracts when powered on.
- Do not plug the power cord with wet hands. Risk of electric shock.



1. Sit On The Toilet Seat



- Be sure to sit on the seat sensor. If the sensor is not occupied, all functions will not operate.
- Skin to seat contact needs to occur to activate seat.

2. Wash, Bidet, Turbo



- Selected function can be used as described.
- When pressing the selected function again, the nozzle will oscillate back and forth to wash a wider range.
- Press the button once again to stop oscillate function
- The specialized water spray in Turbo function helps relieve constipation.

3. Massage



- When pressing the Massage button during the operation of Wash, Bidet, and Turbo, water pressure will repeat high and low for smooth pulsating wash.
- Pulse function will not operate during the operation of Sitz bath.

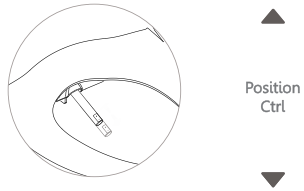
4. Child Function



- When selecting Child Function, settings adjust to low pressure.
- 1 min Bidet - 30 sec Bidet Oscillating - 30 sec Bidet Pulse.
- It provides an extra extended nozzle position, lower water pressure, lower seat temperature, lower water temperature.



5. Nozzle Position Control



- Nozzle position is adjustable (5 levels).

6. Water Pressure Control



- Water pressure is adjustable. (5 levels)
- If the water or screen filters become blocked, it may cause low water pressure. Regularly check the water and screens filters.

7. Stop



- All operations will stop.
- When pressing the stop button for 3 seconds, unit will turn off.
- Press any of Stop, Wash, Bidet, or Turbo to turn on.

8. Seat Temperature Control



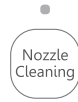
- Seat temperature is adjustable. (4 levels) (Off - Low - Middle - High)
- To reduce the chance of low temperature burns, the seat has a safety feature that turns to low temperature (35°C, 95°F) when seat is occupied for more than 15 minutes consecutively.
- If the seat is set lower than middle level, the seat will remain at off or low level.



9. Energy Saving Function

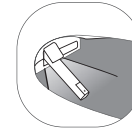
- **ECO 1** - This mode will be activated by pressing the Energy Saving button until the yellow LED light turns on. (Seat and water temperature will be kept at 32°C)
- **ECO 2** - This mode will be activated by pressing the Energy Saving button until the green LED light turns on.
- **ECO OFF** - Press the Energy Saving button until LED light turns off.
- When the unit is occupied, it adjusts to the present temperature and is returned to the saving mode when seat is unoccupied.
- If the seat and water temperature are off, they will remain off.

10. Nozzle Cleaning



- When selecting Nozzle Cleaning while not seated, the nozzle cleans itself 3 times. Then, the nozzle extends and stops for manual cleaning process.
- Clean the nozzle with a brush and press the STOP button after completion of manual cleaning. Then, the nozzle cleans itself for 3 times and retracts.
- **NOZZLE CLEANING** will not operate if the seat sensor is activated.

11. Night Light



More than 3 Seconds



- Blue LED night light provides enough brightness to see the toilet without turning on the bathroom light.
- Night light can be turned on and off by pressing + for 3 secs while not seated.
- Night light setting cannot be adjusted if seat sensor bypass feature is activated.

12. Water Temperature Control



- Water temperature is adjustable. (4 levels) (Off - Low - Middle - High)



13. Sitz Bath



- Wash or Bidet is switched to Wash Sitz Bath or Bidet Sitz Bath if Nozzle Cleaning button is pressed during use.
- Water pressure is switched to 1st level regardless of preset water pressure settings and Sitz Bath operates for 5 minutes.
- LED of Nozzle Cleaning turns on during the operation of Sitz Bath.
- Select the Nozzle Cleaning again to switch to normal Wash or Bidet.

14. Seat Sensor Bypass



- The seat sensor can be activated and deactivated by pressing Massage button for 3 seconds.
- If the seat sensor is deactivated, the unit works without occupying the seat and select features cannot be controlled.
- Features are Night light, Silent mode, and Nozzle cleaning.

15. Reset



- Press and hold the Stop button on the auxiliary panel for 5 seconds.
- After 3 seconds, the seat will power off. Keep holding another 2 seconds and the seat will power back on. This completes the factory reset process.

Using Inline Carbon Filter

Use of external water filter is only recommended in areas with known hard water issues.

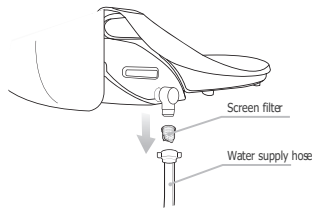
If a filter is used, it must be replaced every 3 months. This product is designed and intended for use exclusively with Bio Bidet DIB water filters.

The purchase or use of any other water filter is not the responsibility of BBC Innovation LLC.

As such, any use of non DIB water filters is prohibited and will void the warranty for those Bio Bidet products. Bio Bidet will not be responsible for any resulting damages or claims related to the misuse or distribution of non Bio Bidet DIB filters.

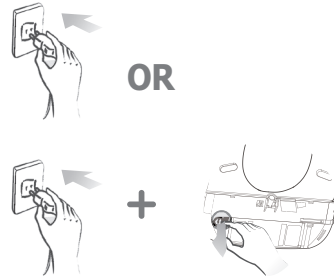


Screen Filter Cleaning



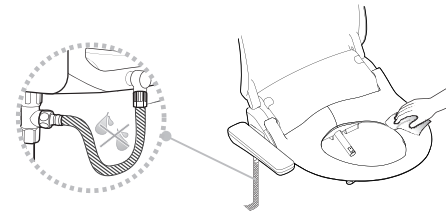
1. Close the water valve.
2. Disconnect the water supply hose. Take the screen filter out and clean it with a soft brush.
3. Return the filter after cleaning and reconnect the water supply hose.
4. Open the water valve.

Maintenance During Winter



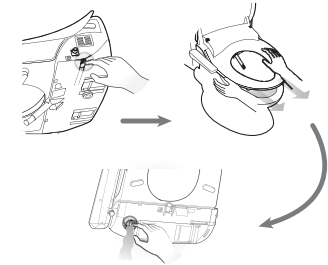
- When bidet seat is not used for an extended period of time, unplug and drain the unit.

Cleaning the Unit



1. Exterior surface of unit is made of plastic material, which may be damaged by scrubber, chemicals, etc.
2. Wipe the surface with a soft damp cloth. Do not spray water directly onto the surface.
3. Clean the body after removing the power plug from the outlet. Be sure no water splashes into the power plug or outlet.
4. Be careful of not dropping any chemical detergents or toilet cleaner on the main body or supply hose to avoid damage.

Draining of Remaining Water




1. Remove the power plug from the outlet.
2. Close the water feed valve.
3. Press the release button and gently pull to remove the unit from the catch plate.
4. Use a coin to open the drain plug.



USER SETTING WITH THE REMOTE CONTROL

● Seat sensor 'off' ○ Seat sensor 'on'


No.	Function	Seat Status	Switch Operation	Description	Initial Status
1	Silent mode	●	" - " For longer than 3 seconds	To turn on/off the operating chime sound.	ON
2	Seat sensor bypass	●	"  " For longer than 3 seconds	Seat sensor feature will be deactivated.	OFF
3	Night light	●	" + " For longer than 3 seconds	To turn on/off the night light.	ON

- The unit will work without sitting on the seat if the occupied seat sensor is deactivated. (Turned off)
- If the seat sensor is deactivated, some features cannot be controlled. (Night light on/off, silent mode on/off, and nozzle cleaning)

PLEASE CHECK THE FOLLOWING POINTS BEFORE REQUESTING REPAIR SERVICE.

Problem	Check list
Completely out of order	<ul style="list-style-type: none"> • Check if the power plug is not connected • Check if the power supply or outlet has failed
Water does not spray out	<ul style="list-style-type: none"> • Check if the water supply is turned on • Check if water valve is open • Check if nozzle is blocked by foreign material • Check if connection hose is bent
Water pressure is low	<ul style="list-style-type: none"> • Check if screen filter is blocked and by foreign material • Check if the water pressure is set at too low level
Water is not warm enough	<ul style="list-style-type: none"> • Check if its temperature is set at off or low level
Seat is not warm enough	<ul style="list-style-type: none"> • Check if its temperature is set at off or low level

USER SETTINGS WITH SIDE CONTROL (AUXILIARY PANEL)

No.	Function	Seat Status	Switch Operation	Description	Initial Status
1	Factory reset	●	Press and hold the Stop button for 5 seconds.	After 3 seconds, the seat will power off. Keep holding another 2 seconds and the seat will power back on. This completes the factory reset process.	ON
2	Power off	●	"  " for longer than 3 seconds	Press one of Stop, Wash, Bidet, Intensive or Dry to power on.	



ITEM		SLIM TWO	
Rated voltage		120V, 60Hz	
Max. Power consumption		870W	
Power cord length		1.2 m	
Water feed method		Directly connected to water pipe	
Recommended inlet water pressure		9.95-106.7 psi	
Wash	Feed Volume	Wash	0.13-0.21 gal/min
		Bidet	0.13-0.18 gal/min
		Turbo	0.13-0.18 gal/min
		Child	0.13-0.16 gal/min
	Pressure control		5 levels
	Temperature control		4 levels (off-low-middle-high)
	Heater capacity		800W
	Safety device		Water level sensor, Thermal fuse, Bi-metal, Temperature sensor
Heated Seat	Temperature control		4 levels (off-low-middle-high)
	Heater capacity		55W
	Safety device		Thermal fuse
Feed water temp. tolerance range		37-95°F (recommended 54-95°F)	
Usage room temp. tolerance range		37-104°F (recommended 50-95°F)	
Dimension	Elongated	15.9"(406) x 20.8"(528) x 6.8"(173)	
Weight Net Weight (Gross Weight)	Elongated	10.4 lb (15.2)	

1 YEAR WARRANTY

Bio Bidet warrants its products to be free from manufacturing defects under normal use and service for a period of 1 year from the date of purchase. This warranty is extended only to the original purchaser.

For full warranty details, visit www.biobidet.com

Thank You

