



## Western Enterprises

875 Bassett Road  
Westlake, OH 44145-1142

**Toll Free:** 800.783.7890

**Phone:** 440.871.2160

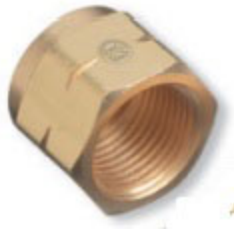
**Email:** [sales@westernenterprises.com](mailto:sales@westernenterprises.com)

**Website:** [www.westernenterprises.com](http://www.westernenterprises.com)

## ITEM # 72, UP TO 3000 PSIG PRESSURE NUT

### Product Specification Guide and Ordering Information for Regulator Inlet Nuts and Nipples

Western offers nuts and nipples in a variety of materials and styles to fit a full range of gas service requirements.



[Specifications](#) | [Additional Information](#) | [Prop 65](#) | [Note](#)

#### Specifications

<b>Field</b>	Industrial	
<b>Gas Service</b>	Butane CGA-555	Propane (Liquid Withdrawal) CGA-555
<b>Pressure Rating</b>	Up to 3000 psig	
<b>Material</b>	Brass	
<b>Threading</b>	0.908 in. - 14 Female National Gas Outlet (NGO) Left Hand (LH)	

#### Additional Information

Five different types of nut/nipple combinations are available:

- Brass nut and nipple
- Stainless steel nut and nipple
- Nut and nipple with check valve
- Nut and nipple recessed for tubing
- Hand tight nut and nipple

#### Prop 65

This product can expose you to

**Warning**

lead, which is known to the State of California to cause cancer and birth defects or other reproductive harm.

**Note**

**Note**

Please note that all types may not be available for certain gas services.