

Mack King Pin Socket

MODEL 40310

ESCO

PRO
SERIES

NEW
ARRIVAL!

Designed to fit the **slotted adjusting screw** in tapered king pins.



MODEL 40310
1.8 in. Mack King Pin
Specialty Socket

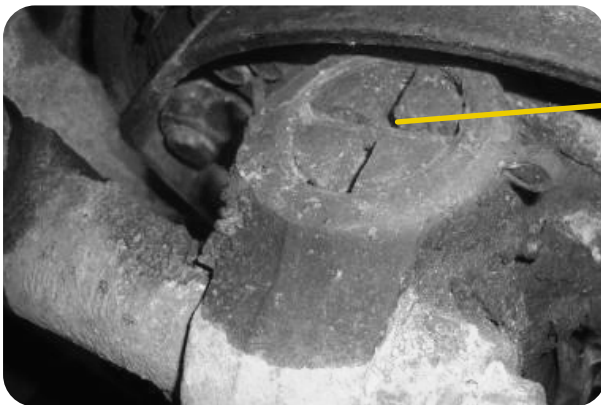
Specifications:

MODEL 40310

The **ESCO 1.8 in. Mack King Pin Socket** is designed to get the job done safer and easier, while working on Mack trucks. Manufactured for use with 1/2 in. square drive ratchets and breaker bars. Designed to fit the slotted adjusting screw in tapered king pins that are most commonly used on most Mack front axles (12,000 to 20,000 lbs.).

BENEFITS & FEATURES:

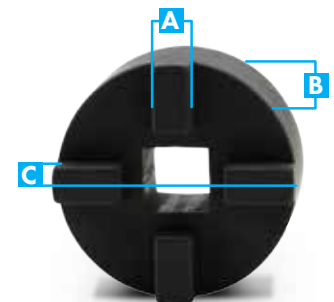
- ▶ Designed to be used on slotted adjusting screw in tapered king pins.
- ▶ Application: Majority of Mack front axles (12,000 to 20,000 lbs.)
- ▶ Use with 1/2 in. square drive ratchet or breaker bar.
- ▶ A must have socket for any technician(s) working on Mach trucks.



Fits in most Mack truck king pin caps to remove king pin. Designed to fit in the "+" design with precision



Model #	40310
Description	1.8 in. Mack King Pin Socket
Crown Width (A)	0.30 in. 7.6 mm
Socket Diameter (B)	1.87 in. 47.5 mm
Socket Height (flat height) (C)	0.85 in. 21.6 mm
Socket Height (a crowns)	1.1 in. 27.94 mm
Drive Size	1/2 in.
Weight	1 lb. 0.45 kg
UPC	816904024963



NOTE: ESCO reserves the right to change, alter, or modify product(s) without notice. This includes but is not limited to product: color, design, parts, accessories, etc.