



AGM  
GLOBAL  
VISION

# WOLVERINE-4

## NIGHT VISION WEAPON SIGHT



The Wolverine-4 is a rugged and advanced night vision rifle scope that offers excellent performance at a competitive price. Boasting a high-quality Gen 2+ image intensifier tube, adjustable illuminated reticle, easy-to-use internal windage and elevation adjustments, and simple controls, the Wolverine-4 allows you to see beyond the expected in nighttime conditions. This rifle scope is manufactured using a specially-coated aircraft alloy. It is equipped with a double-lever quick-release mount that allows for highly-accurate rail positioning to maximize user comfort. The manual precision top wheel focus provides improved accuracy and ergonomics. Water-resistant, lightweight, and robust, the Wolverine-4 is the ideal night vision rifle scope for dedicated hunters and tactical marksmen.

- 4X magnification
- Shock protected, all-glass IR transmission multi-coated optics
- Made from aircraft aluminum alloy
- Illuminated reticle with brightness adjustment
- Quick-release mount
- Mounts to standard weaver rails
- Water and fog-resistant
- Limited 3-year warranty

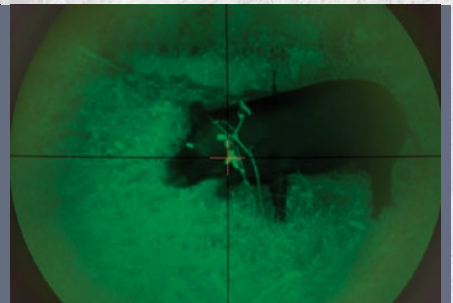
### Package Includes:

Night Vision Weapon Sight, Lens Cloth, Sioux850 Long Range IR Illuminator, User Manual, Soft Carrying Case

Image Intensifier Tube	Gen 2+
Magnification	4x
Lens System	108 mm; F/ 1.54
FOV	9°
Focus Range	10 m to infinity
Diopter Adjustment	-5 to +5 diopters
Eye Relief	45 mm
Reticle Type / Color	Mil-Dot / Illuminated Red Center
Boresight Adjustment Increment	1/4 MOA
Boresight Adjustment Range	±60 MOA
Infrared Illuminator	Detachable, long-range
Battery Type	Single CR123A 3V Lithium battery
Battery Life (Operating)	Up to 50 hours at 20°C
Operating Temperature Range	-40°C to +50°C (-40°F to +122°F)
Storage Temperature Range	-50°C to +70°C (-58°F to +158°F)
Environment Rating	Water and fog-resistant
Weight	1.2 kg (2.6 lb)
Overall Dimensions	308 × 94 × 97 mm (12.1 × 3.7 × 3.8 in)

Specifications are subject to change without notice. Images are for illustration purposes only.

Equipment described herein is subject to US export regulations and may require a license prior to export. Diversion contrary to US law is prohibited.



MAIN OFFICE  
173 West Main Street | PO Box 962 | Springerville | AZ 85938 | USA  
Tel. +1.928.333.4300  
info@agmglobalvision.com | www.agmglobalvision.com

EUROPEAN OFFICE  
Andrey Lyapchev #7 | Sofia | P.C. 1756 | Bulgaria  
Tel. +44.292.255.0509  
info@agmglobalvision.eu | www.agmglobalvision.eu

[www.agmglobalvision.com](http://www.agmglobalvision.com)