

HALO BIG BLOCK SRL- LE

Parts: 10924, 10927, 10928

Instruction Manual



- ✘ Do not throw instructions away.
- ⚠ Read and understand instructions before using this equipment.

2	Introduction
2	Product Specific Applications
2	Applicable Safety Standards
2	For All Product Applications
2	Worker Classifications
3	Compatibility
3	Limitations
3	Maintenance, Cleaning, and Storage
3	Installation and Use
5	Product Specifications & Materials
6	Safety Information
7	Labels
8	Diagrams
9	Inspection
10	Inspection Log

Introduction

Thank you for purchasing a Guardian Fall Protection Halo SRL-LE. This manual must be read and understood in its entirety, and used as part of an employee training program as required by OSHA or any applicable state agency. This and any other included instructions must be made available to the user of the equipment. The user must understand how to safely and effectively use the Halo SRL-LE, and all fall safety equipment used in combination with the Halo SRL-LE.

⚠ WARNING! Use of equipment in unintended applications may result in serious injury or death. Maximum 1 attachment per connection point.

Product Specific Applications



May be used to support a MAXIMUM 1 in a **Personal Fall Arrest System (PFAS)** for use in Fall Arrest applications.

Structure must withstand loads applied in the directions permitted by the system of at least 5,000 lbs (22,2 kN). Maximum free fall is 5' (1, 5 m). SRL may be positioned a maximum 5' (1, 5 m) above anchor point.

D-ring: **Dorsal**

⚠ WARNING! It is prohibited to use any type of extension in combination with this product. The shock absorbing component must always be connected directly to the harness dorsal D-ring.



Halo SRL-LE may be used in **Travel Restraint** applications. Restraint systems prevent workers from reaching the leading edge of a fall hazard. Always account for fully deployed length of lanyard/SRL. Structure must withstand loads applied in the directions permitted by the system of at least 1,000 lbs (4,4 kN). No free fall is permitted. Restraint systems may only be used on surfaces with slopes up to 4/12 (vertical/horizontal).

D-rings: **Dorsal**

Applicable Safety Standards

Meets or exceeds:

- **OSHA 1910.140**
- **OSHA 1926.502**

For All Product Applications

- **Maximum user weight (including all clothing, tools, and equipment) is:**

OSHA(LE): 100 - 310 lb (45 - 141 kg)

OSHA(Non-LE): 100 - 420 lb (45 - 191 kg)

⚠ CAUTION! Understand the following definitions of those who work near or who may be exposed to fall hazards.

Worker Classifications

- **Qualified Person:** A person with an accredited degree or certification, and with extensive experience or sufficient professional standing, who is considered proficient in planning/reviewing the conformity of fall protection and rescue systems.
- **Competent Person:** A highly trained and experienced person who is ASSIGNED BY THE EMPLOYER to be responsible for all elements of a fall safety program, including, but not limited to, its regulation, management, and application. A person who is proficient in identifying existing and predictable fall hazards, and who has the authority to stop work in order to eliminate hazards.
- **Authorized Person:** A person who is assigned by their employer to work around or be subject to potential existing fall hazards.
- **It is the responsibility of a Qualified or Competent person to supervise the job site and ensure all applicable safety regulations are complied with.**

Compatibility

When making connections to the Halo SRL - LE, eliminate all possibility of roll-out. Roll-out occurs when interference between a connector and the attachment point causes the connector gate to unintentionally open and release.

All connections must be selected and deemed compatible with Halo SRL - LE by a Competent Person.

All connector gates must be self-closing, self-locking, and withstand a minimum load of 3,600 lb (16 kN).

See Diagram B on page 8.

Limitations

Fall Clearance: There must be sufficient clearance below the work surface to arrest a fall before the user strikes the ground or an obstruction. When calculating fall clearance, account for a MINIMUM 2 ft (0,6 m) safety factor, deceleration distance, user height, length of lanyard/SRL, harness stretch, free fall, and all other applicable factors.

See Diagram A on page 8.

Swing Falls: Prior to installation or use, make considerations for eliminating or minimizing all swing fall hazards. Swing falls occur when the anchor is not directly above the location where a fall occurs. Always work as close to in line with the anchor point as possible. Swing falls significantly increase the likelihood of serious injury or death in the event of a fall.

Maintenance, Cleaning, and Storage

If Halo SRL-LE fails inspection in any way, immediately remove it from service, and contact Guardian to inquire about its return or repair. Cleaning after use is important for maintaining the safety and longevity of Halo SRL-LE. Remove all dirt, corrosives, and contaminants from Halo SRL-LE before and after each use. If Halo SRL-LE cannot be cleaned with plain water, use mild soap and water, then rinse and wipe dry. NEVER clean Halo SRL-LE with corrosive substances. When not in use, store equipment where it will not be affected by heat, light, excessive moisture, chemicals, or other degrading elements.

⚠ WARNING! Do not remove shrink tube around shock absorber.

Installation and Use

Prior to Installation, plan your system

1. All PFAS components must be selected and deemed compatible with Halo SRL-LE by Competent Person.
2. Ensure structure to which Halo SRL-LE is to be attached, and on which work is to be performed, is free of all hazards, including, but not limited to, debris, rot, rust, sharp or abrasive edges and surfaces, and hazardous materials.
3. Eliminate or minimize all risk of swing fall hazard.
4. Halo SRL-LE may be used in either stationary or mobile applications. For stationary applications, attach Halo SRL-LE carabiner to selected anchorage connector, and attach snap hook to applicable harness D-ring. For LE applications, snap hook end must be connected to harness dorsal D-ring. Shock absorber component must always be located at the worker's back.
5. Ensure 100% tie-off will be maintained at all times, which may require the use of a back-up or supplementary fall protection system.

▲ WARNING! ALWAYS adhere to the following warnings and specifications when using SRL-LEs.

- Halo SRL-LEs are tested and certified for horizontal use over a steel edge without burrs. Halo SRL-LEs may be used over similar surfaces, such as metal sheeting or other steel formations.
- The allowable angle of redirection of the lifeline portion of Halo SRL-LEs at the leading edge of a fall hazard MUST be at least 90° (see Diagram C).
- Anchor point MUST be situated no lower than the leading edge of applicable fall hazard(s).
- Prior to use, a Competent Person MUST calculate adequate fall clearance (see pg. 2).
- Setback distance: As determined by product testing, Guardian Fall Protection Halo SRL-LEs are not required to be setback any specific distance from the leading edge of applicable fall hazard(s).
- Halo SRL-LE may be used in combination with horizontal lifelines. All installation, set-up, and use of horizontal lifelines must be done under the supervision of a Qualified Person.
- **NEVER work on the far side of an opening that is opposite the Halo SRL-LE anchorage point.**
- **In the event of a fall over the edge, special rescue measures may be necessary. Always account for use of Halo SRL-LE in job site rescue plan developed by job site Competent Person.**

Specifications

- **User weight range (including all clothing, tools, and equipment):**

OSHA (LE): 100 - 310 lb (45 - 141 kg)

OSHA (Non-LE): 100 - 420 lb (45 - 191 kg)

- **Maximum Arrest Force: 1,800 lb (8 kN)**

- **Average Arrest Force: 900 lb (4 kN)**

- **Maximum Arrest Distance:**

Non-LE: 3 ft 6 in (1,1 m)

LE: 8 ft 6 in (2,6 m)

See Diagram A on page 9.

- **Minimum Required Fall Clearance:**

Non-LE: 7 ft (2,1 m)

LE: 17 ft (5,2 m)

- **Permitted Service Temperature Range:**

-40°F to 130°F (-40°C to 54°C)

Note: Non-LE = Anchor at or above D-ring height

Materials

3/16 in (4,8 mm) Galvanized Steel cable, aluminum, polyolefin, polyester.



Part #	Length	Description
10924	50 ft (15,2 m)	3/16" Nylon-Coated Galvanized Cable SRL-LE w/Shock Pack, Swivel Top, Snap Hook, Boot Cover, & Carabiner
10927	50 ft (18,2 m)	3/16" Galvanized Cable SRL-LE w/Shock Pack, Swivel Top, Snap Hook, Boot Cover, & Carabiner
10928	65 ft (18,2 m)	3/16" Galvanized Cable SRL-LE w/Shock Pack, Swivel Top, Snap Hook, Boot Cover, & Carabiner

Safety Information

▲ WARNING! Failure to understand and comply with safety regulations may result in serious injury or death. Regulations included herein are not all-inclusive, are for reference only, and are not intended to replace a Competent Person's (CP) judgment or knowledge of federal or state standards.

Do not alter equipment.

Do not misuse equipment.

Workplace conditions, including, but not limited to, flame, corrosive chemicals, electrical shock, sharp objects, machinery, abrasive substances, weather conditions, and uneven surfaces, must be assessed by a Competent Person before fall protection equipment is selected.

The analysis of the workplace must anticipate where workers will be performing their duties, the routes they will take to reach their work, and the potential and existing fall hazards they may be exposed to. Fall protection equipment must be chosen by a Competent Person. Selections must account for all potential hazardous workplace conditions. All fall protection equipment should be purchased new and in an unused condition.

Fall protection systems must be selected and installed under the supervision of a Competent Person, and used in a compliant manner. Fall protection systems must be designed in a manner compliant with all federal, state, and safety regulations. Forces applied to anchors must be calculated by a Competent Person.

Harnesses and connectors selected must be compliant with manufacturer's instructions, and must be of compatible size and configuration. Snap hooks, carabiners, and other connectors must be selected and applied in a compatible fashion. All risk of disengagement must be eliminated. All snap hooks and carabiners must be self-locking and self-closing, and must never be connected to each other.

See Diagram B on page 8.

A pre-planned rescue procedure in the case of a fall is required. The rescue plan must be project-specific. The rescue plan must allow for employees to rescue themselves, or provide an alternative means for their prompt rescue. Store rescue equipment in an easily accessible and clearly marked area.

Training of Authorized Persons to correctly erect, disassemble, inspect, maintain, store, and use equipment must be provided by a Competent Person. Training must include the ability to recognize fall hazards, minimize the likelihood of fall hazards, and the correct use of personal fall arrest systems.

NEVER use fall protection equipment of any kind to hang, lift, support, or hoist tools or equipment, unless explicitly certified for such use.

Equipment subjected to forces of fall arrest must immediately be removed from use.

Age, fitness, and health conditions can seriously affect the worker should a fall occur. Consult a doctor if there is any reason to doubt a user's ability to withstand and safely absorb fall arrest forces or perform set-up of equipment. Pregnant women and minors must not use this equipment.

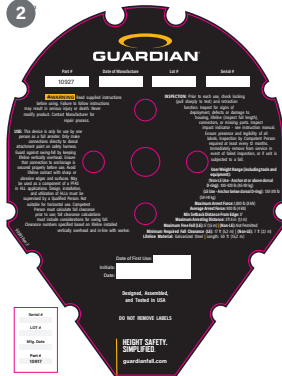
Physical harm may still occur even if fall safety equipment functions correctly. Sustained post-fall suspension may result in serious injury or death. Use trauma relief straps to reduce the effects of suspension trauma.

Labels

1



2



1

GUARDIAN

HALO

Self-Retracting Lifeline OSHA 1926.502 & 1910.140 WARNING!

Not suitable for leading edge use Nunca deben usarse en aplicaciones de borde expuesto

2

WARNING! Read supplied instructions before using. Failure to follow instructions may result in serious injury or death. Never modify product. Contact Manufacturer for repair process. **USE:** This device is only for use by one person as a fall arrester. Only make connections directly to dorsal attachment point on safety harness. Guard against swing-fall by keeping lifeline vertically overhead. Ensure that connection to anchorage is secured properly before use. Avoid lifeline contact with sharp or abrasive edges and surfaces. May be used as a component of a PFAS in HLL applications. Design, installation, and utilization of HLLs must be supervised by a Qualified Person. Not suitable for horizontal use. Competent Person must calculate fall clearance prior to use; fall clearance calculations must include considerations for swing fall. Clearance numbers specified based on lifeline installed vertically overhead and in-line with worker.

INSPECTION: Prior to each use, check locking (pull sharply to test) and retraction function. Inspect for signs of deployment, defects or damage to housing, lifeline (inspect full length), connectors, or missing parts. Inspect impact indicator - see instruction manual. Ensure presence and legibility of all labels. Inspection by Competent Person required at least every 12 months. Immediately remove from service in event of failed inspection, or if unit is subjected to a fall. **User Weight Range** (including tools and equipment): (Non-LE Use - Anchor at or above dorsal D-ring): 100-420 lb (45-191 kg) (LE Use - Anchor below dorsal D-ring): 130-310 lb (59-141 kg) **Maximum Arrest Force:** 1,800 lb (8 kN) **Average Arrest Force:** 900 lb (6 kN) **Min Setback Distance From Edge:** 0' **Maximum Arresting Distance:** 42" (1,1 m) **Maximum Free Fall (LE):** 5' (1,5 m) | (Non-LE): Not Permitted **Minimum Required Fall Clearance (LE):** 17 ft (5,2 m) | (Non-LE): 7 ft (2,1 m) **Lifeline Material:** Galvanized Steel | **Length:** 50 ft (15,2 m) **Part#:** 90593 Rev: F

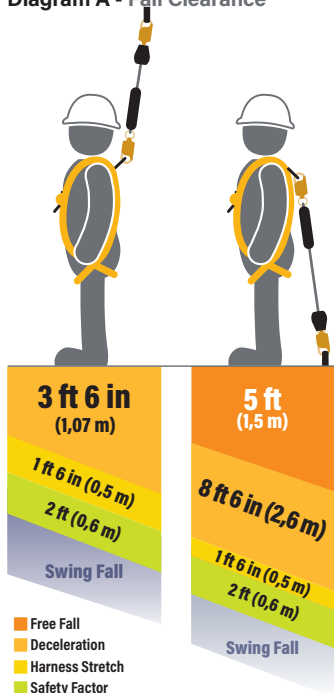
LOT # Mfg. Date Part # 10927 Serial # HEIGHT SAFETY.SIMPLIFIED.

guardianfall.com

Part # Date of Manufacture Lot # Serial #

Date: Initials: Date of First Use:

Diagram A - Fall Clearance



⚠ WARNING! Eliminate Swing Fall whenever possible! If swing fall exists, always account for additional fall clearance.

⚠ CAUTION! Fall clearance calculation shown is based on a standing worker falling directly in-line with anchor point.

⚠ SAMPLE CALCULATION ONLY. Always refer to connector instructions for product-specific clearance information.

Diagram B - Connections

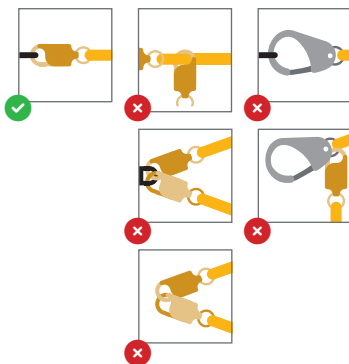
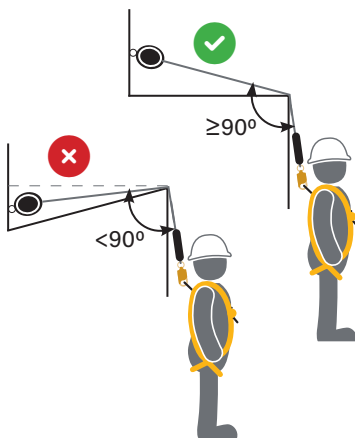


Diagram C - Permitted Lifeline Redirection Angle



Inspection

Prior to EACH use, inspect SRL for deficiencies, including, but not limited to, corrosion, deformation, pits, burrs, rough surfaces, sharp edges, cracking, rust, paint build-up, excessive heating, alteration, broken stitching, fraying, and missing or illegible labels. IMMEDIATELY remove SRL from service if defects or damage are found, or if exposed to forces of fall arrest.

Take special care to inspect stitching impact indicator located at webbing loop at top of SRL. Stitching must be intact and not broken, frayed, or otherwise compromised. If red tag is visible, remove from service.

Ensure that applicable work area is free of all damage, including, but not limited to, debris, rot, rust, decay, cracking, and hazardous materials. Ensure that work area will support the application-specific minimum loads set forth in this manual. Work area MUST be stable.

At least every 12 months, a Competent Person (CP) other than the user must inspect SRL.

Inspections MUST be recorded in inspection log in instruction manual and on equipment inspection grid label. The Competent Person must sign their initials in the box corresponding to the month and year the inspection took place.

During inspection, consider all applications and hazards the SRL has been subjected to.

Product lifetime is indefinite as long as it passes pre-use and Competent Person inspections.

This inspection log must be specific to one SRL. Separate inspection logs must be used for each SRL. All inspection records must be made visible and available to all users at all times. If equipment fails inspection it must be discarded immediately.

Inspection Log

Serial No:	Date of first issue:
Model #:	User:

Date:	Results/Condition:	Inspected by:	Next Inspection Date:



GUARDIAN
Notes

**USA**

607 East Sam Houston Parkway South
Suite 800
Pasadena, TX 77503
800 466 6385
customer.service@guardianfall.com

UK

New Road, Sheerness
Kent ME12 1PZ
United Kingdom
+44 (0) 1795 580 333
enquiries@guardianfall.com

CANADA

580 Notre Dame Avenue, Unit 16
Sudbury, ON
P3C 5L2
800 466 6385
customer.service@guardianfall.com

WARRANTY: Guardian warrants to Buyer that all products are free from defects in material, workmanship, and design (if a Supplier-responsible design), however this warranty does not cover conditions resulting from normal wear and tear, neglect, abuse, accident or otherwise. Guardian's obligations under this warranty apply for the lifetime of the products and are limited to the replacement of product only. This warranty is not transferable to any other Guardian service and does not apply to product that is resold after having been put into service. No other person, firm, entity, or the like is authorized to assume or assign for Guardian any other liability in connection with the sale or use of Guardian's products. Furthermore, this warranty is void if any product is changed or altered in any way, or if the product is used in a manner other than for which it is intended. There are no implied warranties of merchantability or fitness for a particular purpose, which are specifically disclaimed.
